

WET AGE-RELATED MACULAR DEGENERATION

Understanding Wet AMD, Sudden Central Vision Change, Assessment & Urgent Treatment



EDGBASTON EYE CLINIC

Safe, Efficient & Patient Centred Care

5 ★ Rated on Google

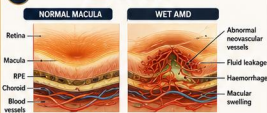
Wet age-related macular degeneration (wet AMD) is caused by abnormal blood vessels growing under or within the macula. These vessels can leak fluid or blood, damaging the retina and threatening central vision. Prompt assessment and timely treatment are important to preserve vision and reduce the risk of permanent damage.

1 CAUSES & RISK FACTORS

- 1 Ageing
- 2 Previous dry AMD / drusen
- 3 Family history / genetics
- 4 Smoking
- 5 Cardiovascular risk factors
- 6 Hypertension
- 7 Poor diet / obesity
- 8 Caucasian ethnicity

Wet AMD can develop from dry AMD and may cause sudden vision change.

2 WHAT HAPPENS?



- Abnormal new blood vessels develop beneath the macula
- They leak fluid or blood
- This disturbs the retinal layers and central vision
- Scar tissue may develop if untreated

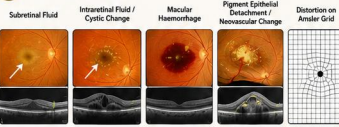
Urgent diagnosis helps protect vision.

3 COMMON SYMPTOMS

- 1 Distortion of straight lines (metamorphopsia)
- 2 Blurred or reduced central vision
- 3 A dark or blank patch in the centre of vision
- 4 Difficulty reading or recognising faces
- 5 Reduced contrast or colour appreciation
- 6 Rapid change in one eye

Sudden distortion or a sudden drop in central vision needs urgent review.

4 CLINICAL FINDINGS



- Fluid or blood at the macula
- Retinal swelling on OCT
- Possible drusen or pigment changes
- Central vision affected more than side vision

OCT and clinical examination help confirm active wet AMD.

5 ASSESSMENT AT EDGBASTON EYE CLINIC

- ✓ Full symptom and vision assessment
- ✓ Keeler digital slit lamp examination
- ✓ Dilated retinal examination
- ✓ OCT scanning of the macula
- ✓ Optos Daytona ultra-widefield retinal imaging
- ✓ Advice regarding urgent onward referral when needed



Prompt assessment helps distinguish wet AMD from dry AMD and other causes of central vision change.

6 MANAGEMENT / TREATMENT

A URGENT REFERRAL



Suspected wet AMD should be referred promptly to a specialist hospital / retinal service.

Edgbaston Eye Clinic assesses, advises and refers onward when appropriate. We do not perform intravitreal injections.

B ANTI-VEGF TREATMENT



Treatment is usually with intravitreal anti-VEGF injections in a specialist hospital / retinal setting.

The aim is to reduce leakage and preserve vision.

Edgbaston Eye Clinic assesses, advises and refers onward when appropriate.

C MONITORING



Ongoing review and OCT monitoring are important.

Vision changes between visits should not be ignored.

Edgbaston Eye Clinic assesses, advises and refers onward when appropriate.

D SUPPORTIVE ADVICE



- Stop smoking
- Optimise cardiovascular risk factors
- Use Amsler grid / self-monitoring where advised

Edgbaston Eye Clinic assesses, advises and refers onward when appropriate.

Early treatment offers the best chance of stabilising vision.

7 WHEN TO SEEK URGENT HELP

- 1 Sudden distortion of straight lines
- 2 Sudden drop in central vision
- 3 New central dark patch or blur
- 4 Rapid worsening in one or both eyes
- 5 New symptoms in the fellow eye

Seek urgent specialist eye assessment if you notice sudden central visual change or distortion.

8 KEY POINTS

- 1 Wet AMD can threaten central vision quickly
- 2 Distortion is an important warning sign
- 3 OCT helps confirm active disease
- 4 Anti-VEGF treatment is time-sensitive
- 5 Prompt assessment helps protect sight

EDGBASTON EYE CLINIC

Safe, Efficient & Patient Centred Care
5 ★ Rated on Google

01217263199
info@edgbastoneyeclinik.co.uk
www.edgbastoneyeclinik.co.uk

Mr Don Williams FAO FCOptom
Ophthalmology (ACP)

Personalised Care. Clinical Excellence. Better Outcomes.